

2900 Marine Load Pin



Description

The 2900 marine pin is designed for each application and special features can be included. The pin is generally manufactured from high strength stainless steel and is issued with certified material certificates. The strain gauges are internally installed that is back filled with dielectric gel.

- ▶ Tensile or compressive load measurement
- ▶ Easily employed
- ▶ Withstand harsh environments
- ▶ High strength stainless steel load pin.
- ▶ Complete with protection cage
- ▶ Fitted with marine connector



www.activeload.co.uk

email: info@activeload.co.uk
tel: +44(0)1491 680123

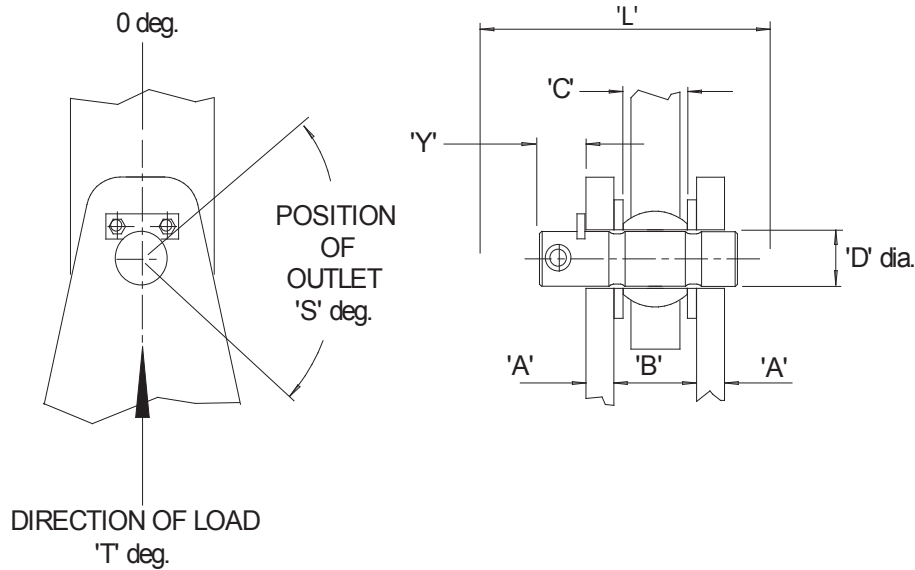
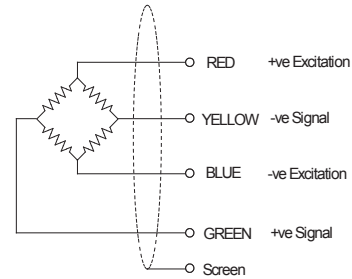
Specifications

ELECTRICAL	
Recommended excitation	10 Vdc.
Maximum excitation	15 Vdc.
Output at rated load	1.5mV/V
Zero balance	5% of RL
Input impedance	700ohms +/-20
Output impedance	700ohms +/- 3
Insulation	>10 ⁹ ohms
Compensation temp range	10 to 60 C
Safe temp range	-30 to 70 C

MECHANICAL	
Safe overload	150% of RL
Ultimate overload	300% of RL
Deflection	<0.5mm
Cable type	As specified
Cable length	As specified
Sealing	IP68

Accuracy

Non linearity & hysteresis	1.0%
Non repeatability	0.5%
Zero return (after 30 mins).	0.08%
Temp effect/10deg C on zero	0.05%
Temp effect/10deg C on span	0.03%



Rating	'A'	'B'	'C'	'D'	'S'	'T'	'Y'
te	mm	mm	mm	mm	mm	mm	mm

Note:

PLEASE ADD ANY SPECIAL NOTES

Note:

We reserve the right to change specification as deemed necessary with continuous improvement.

