

2650 Load Shackle



Description

The 2650 load shackle has been designed for measuring tensile loads using double shear strain gauged element. The range is from 5 tonne to 100 tonne, with higher capacities available by request.

The load pin is manufactured from high strength alloy steel and fitted with mild steel bobbin and anti-rotation plate.

The load cell is used for temporary or permanent rope tension applications, or for under hook weighing, particularly in rugged and harsh conditions. It can also be used at the dead end of a rope such as a winch or crane.

- ▶ Tensile load measurement
- ▶ Easily employed
- ▶ Withstand harsh environments
- ▶ High strength steel load pin.
- ▶ Complete with bobbin and anti-rotation plate.
- ▶ Fitted with integral cable.



www.activeload.co.uk

email: info@activeload.co.uk
tel: +44(0)1491 680123

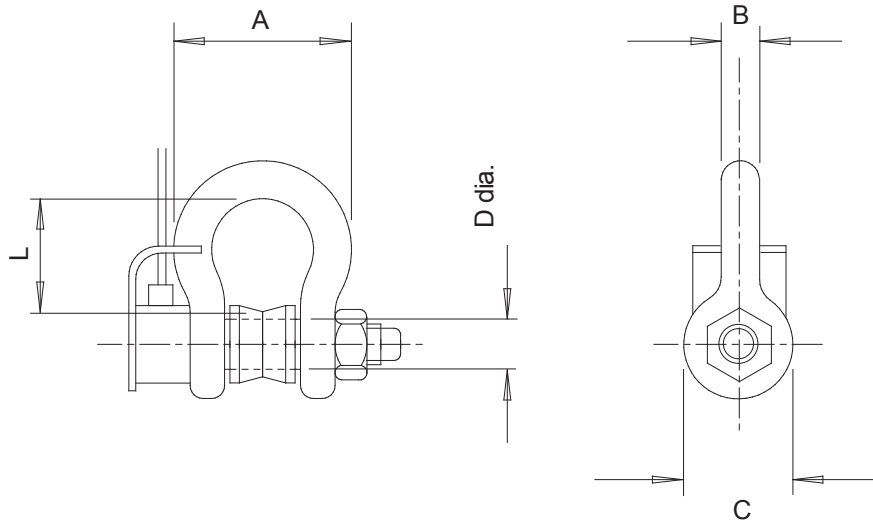
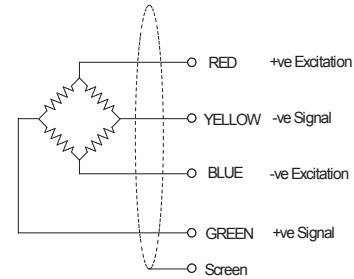
Specifications

ELECTRICAL	
Recommended excitation	10 Vdc.
Maximum excitation	15 Vdc.
Output at rated load	2.0mV/V
Zero balance	5% of RL
Input impedance	700ohms +/-20
Output impedance	700ohms +/- 3
Insulation	>10 ⁹ ohms
Compensation temp range	10 to 60 C
Safe temp range	-30 to 70 C

MECHANICAL	
Safe overload	150% of RL
Ultimate overload	300% of RL
Deflection	<0.5mm
Cable type	4 core screened
Cable length	10 M
Sealing	IP68

Accuracy

Non linearity & hysteresis	1.0%
Non repeatability	0.25%
Zero return (after 30 mins).	0.08%
Temp effect/10deg C on zero	0.05%
Temp effect/10deg C on span	0.03%



Rating	'A'	'B'	'C'	'D'	'L'
te	mm	mm	mm	mm	mm
5	132	25	60	28	75
10	146	32	76	35	85
17	175	38	92	41	115
25	225	45	105	51	140
35	253	50	127	57	160
50	327	65	152	70	180
75	365	75	165	83	210

Note:

We reserve the right to change specification as deemed necessary with continuous improvement.