

# 2385 Compressive Load Cell



## Description

The 2385 compressive load cell has full environmental protection and is built for rugged applications. The load cell is constructed from high strength stainless steel that is built, using welding techniques. A complete range covers the load capacities from 50 tonne up to 1000 tonne. Each load cell is fitted with a domed loading cap that can have loading restrants. The loading cap help to offset any error due to excentric loading and also accommodate uneven loading surface. The cable exit is via robust connector with mating plug and 10 metres of heavy duty instrument cable.

- ▶ Robust compression measurement
- ▶ Easily employed
- ▶ Withstand harsh environments
- ▶ High strength stainless steel
- ▶ Fitted with connector
- ▶ Suitable for hazardous areas



[www.activeload.co.uk](http://www.activeload.co.uk)

email: [info@activeload.co.uk](mailto:info@activeload.co.uk)  
tel: +44(0)1491 680123

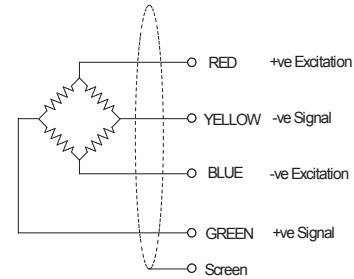
## Specifications

ELECTRICAL	
Recommended excitation	10 Vdc.
Maximum excitation	15 Vdc.
Output at rated load	1.5mV/V
Zero balance	5% of RL
Input impedance	700ohms +/-20
Output impedance	700ohms +/- 3
Insulation	>10 <sup>9</sup> ohms
Compensation temp range	10 to 60 C
Safe temp range	-30 to 70 C

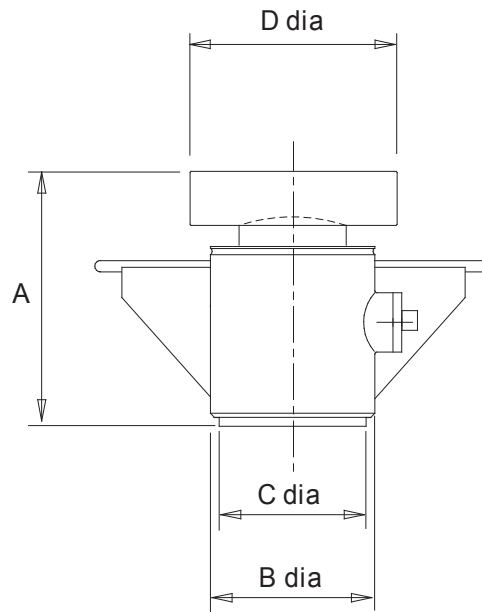
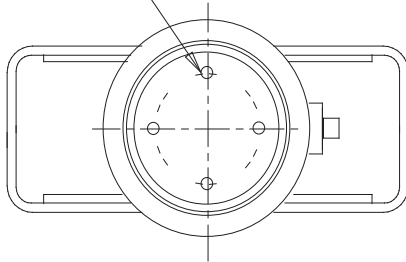
MECHANICAL	
Safe overload	150% of RL
Ultimate overload	300% of RL
Deflection	<0.5mm
Cable type	4 core screened
Cable length	10 M
Sealing	IP68

## Accuracy

Non linearity & hysteresis	0.2%
Non repeatability	0.2%
Zero return (after 30 mins).	0.05%
Temp effect/10deg C on zero	0.05%
Temp effect/10deg C on span	0.03%



4 - holes E dia  
on a F pcd.



Rating	'A'	'B'	'C'	'D'	'E'	'F'
te	mm	mm	mm	mm	mm	mm
50	150	90	80	102	M4	54
100	170	108	88	145	M6	60
150	170	108	88	145	M6	60
200	170	108	88	145	M6	60
300	223	134	107	175	M6	70
500	295	165	138	225	M8	90
1000	362	203	176	270	M10	150

### Note:

We reserve the right to change specification as deemed necessary with continuous improvement.